



**LECI - CAFRIME REEFER - SEMITRAILERS
 MODEL : LTF 3 ES**

SPECIFICATION

GVW: 34,000 kgs. Tare weight : 8,800 kgs approx. Including Reefer unit.
 Internal Dimensions: Length: 13,360 mm/ Width: 2,470 mm. Interior Heights: from 2600mm to 2850 mm. Fifth wheel height: From 1170 mm. Total height: 4,120 mm ota

STRUCTURE: Straight longitudinal main beams. IPN80 lacing cross members.

Gooseneck section as per ISO 1760 norms, 60 mm height; the whole on special ST-52.3 steel.

AXLES/SUSPENSION: Integral B.P.W. running gear with - 3x8 Tons BPW (disc brakes).
 BPW air suspension, Up & Down valve, as standard

TYRES: (6) Complete tyres, including spare carrier; dimension: 385/65 R 22.5.

INSTALLATIONS: "Fully protected on PVC pipes"

ELECTRIC: 24 V., 2 plugs, 7 Poles. Side marker lights - LED by Aspack
BRAKES: As per CEE norms/E.B.S.: In one axle, VCS 2 S / 2M and FSS KING - PIN 2", removable from outside.

LANDING LEGS: Mechanical, with articulated pads.

ACCESSORIES: Rubber mudguards, Wheel set key, Double roller rear spare wheel support, Wheel blocks, Closed pallet carrier 34 Euro Pallets..

FINISH: The whole steel structure is subjected to a shot blasting process (SA 2.5wg 150 - 8501)

Paint & primer in two pack. Top coat - RAL Code

REEFER BODY - FRC & ATP:

Polyester reinforced reefer body on FRC norms and K factor : 0,31

Rear frame on shining stainless steel (inox) 3 mm thickness.

Rear doors 65 mm thickness, two leaves with rubber seals.(3) Stainless steel hinges and one (1) cam locking device per door

One (1) ventilation door at rear door .

Frontal of 105 mm thickness, with (2) ventilation doors. Interior Inox kick strip.

Floor: Reinforced ant sliding floor of 120 mm thickness.

Side walls: 63 mm thickness reinforced sandwich panel with Aluminium kick strip 300 mm each side and one (1) full length

Lashing rail located (at 1,200 mm) or to be confirmed.

Roof: 65 mm thickness reinforced sandwich panel with (3) three recessed internal lights .

Accessories: Large toolbox, Rear full width Delta rubber buffer; Rear access ladder; Full width rubber mud flaps .

Reefer cooling machine inside protector; Rear door retainers and holder;

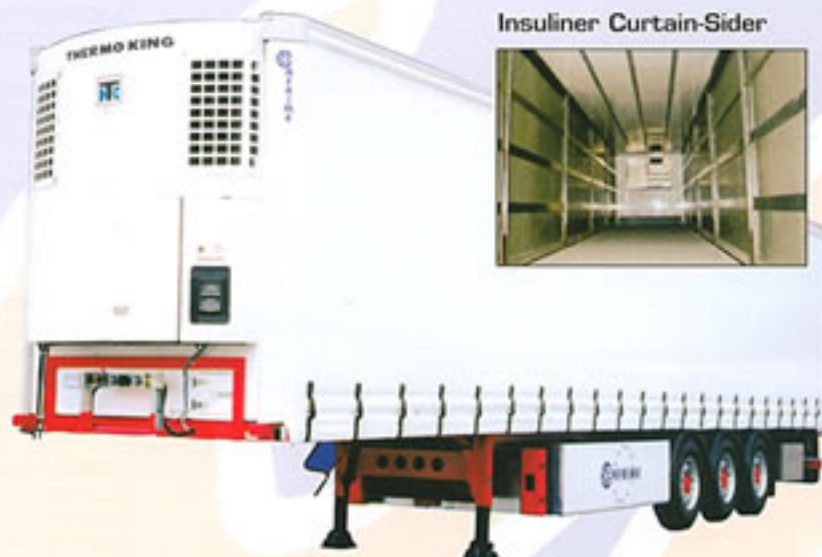
Stainless steel security locking device at rear doors.

Body Colours: Ral 9010 white.

Options:

- oCarrier Maxima 1200 & 1300 Diesel + Electric
- oCarrier Vector 1800 Diesel + Electric
- oThermo King SL 200 Sterling Diesel + Electric
- oThermo King SL400 Diesel + Electric
- oThermo King Spectrum Multitemp Unit
- oZanotti Transblock
- oAluminium Floor
- oVarious Types; Thermograph Data Recorder (Printer; GPS; Down Loads Etc)
- oMeat Rails
- oInternal Dual Temperature wall with fan assembly
- oFood/Tool boxes
- oSecurity locking device for rear doors
- oLift Axle
- oHub-meter
- oSpare Wheel

Please call our office for any additional information



Insuliner Curtain-Sider

